

# Siglec-7 engagement by GBS $\beta$ -protein suppresses pyroptotic cell death of natural killer cells

Jerry J. Fong<sup>a,b</sup>, Chih-Ming Tsai<sup>a,b</sup>, Sudeshna Saha<sup>a,b</sup>, Victor Nizet<sup>a,c,d</sup>, Ajit Varki<sup>a,b,e,1</sup>, and Jack D. Bui<sup>f,1</sup>

<sup>a</sup>Glycobiology Research and Training Center, School of Medicine, University of California, San Diego, La Jolla, CA 92093; <sup>b</sup>Department of Cellular and Molecular Medicine, School of Medicine, University of California, San Diego, La Jolla, CA 92093; <sup>c</sup>Department of Pediatrics, School of Medicine, University of California, San Diego, La Jolla, CA 92093; <sup>d</sup>Skaggs School of Pharmacy and Pharmaceutical Sciences, School of Medicine, University of California, San Diego, La Jolla, CA 92093; <sup>e</sup>Department of Medicine, School of Medicine, University of California, San Diego, La Jolla, CA 92093; and <sup>f</sup>Department of Pathology, School of Medicine, University of California, San Diego, La Jolla, CA 92093

Edited by Lewis L. Lanier, University of California, San Francisco, CA, and approved August 31, 2018 (received for review March 21, 2018)

Natural killer (NK) cells are innate immune lymphocytes that recognize and destroy abnormal host cells, such as tumor cells or those infected by viral pathogens. To safely accomplish these functions, NK cells display activating receptors that detect stress molecules or viral ligands displayed at the cell surface, balanced by inhibitory receptors that bind to self-molecules. To date, such activating and inhibitory receptors on NK cells are not known to recognize bacterial determinants. Moreover, NK cell responses to direct interactions with extracellular bacteria are poorly explored. In this study, we observed the human neonatal pathogen group B *Streptococcus* (GBS) can directly engage human NK cells. The interaction was mediated through the B6N segment of streptococcal  $\beta$ -protein, binding to the inhibitory receptor Siglec-7 via its amino-terminal V-set domain. Unlike classical Siglec binding, the interaction is also independent of its sialic acid recognition property. In contrast to WT GBS, mutants lacking  $\beta$ -protein induced efficient pyroptosis of NK cells through the NLRP3 inflammasome, with production and secretion of the proinflammatory cytokine IL-1 $\beta$  and dissemination of the cytotoxic molecule granzyme B. We postulate that GBS evolved  $\beta$ -protein engagement of inhibitory human Siglec-7 to suppress the pyroptotic response of NK cells and thereby block recruitment of a broader innate immune response, i.e., by “silencing the sentinel.”

natural killer cells | Siglec | group B *Streptococcus* | pyroptosis | inflammasome

Natural killer (NK) cells are lymphocytes of the innate immune system that recognize endogenous eukaryotic cells under stress, such as tumor cells or cells infected by intracellular pathogens, modulating this process through an array of activating and inhibitory receptors (1–3). Activating receptors on human NK cells include NKG2D (4–6) and the natural cytotoxicity receptor family consisting of NKp46, NKp44, and NKp30 (7). These receptors bind to a variety of ligands displayed on the surface of eukaryotic cells during infection, or in response to stress or transformation (7–9). To avoid inadvertent destruction of healthy host cells, NK cells also express inhibitory receptors that bind to host molecules recognized as “self” (1), including the KIR (killer-cell Ig-like receptor) family, which recognizes HLA class I molecules expressed on normal autologous cells. The combined landscape of activating and inhibitory ligands on a target’s surface determines whether the NK cell becomes activated, leading to cytokine secretion and release of cytotoxic molecules such as perforin, granulysin, and granzymes (3). These activating and inhibitory receptors are not known to recognize determinants on bacteria, and direct interactions or responses against extracellular bacteria by NK cells are poorly explored (3, 10). Here we report on the unexpected finding that the important human pathogen group B *Streptococcus* (GBS) engages another known inhibitory receptor on human NK cells, the sialic acid-recognizing Ig-like lectin-7 (Siglec-7).

Siglec-7 is a member of the Siglec subfamily of CD33-related Siglecs (CD33rSiglecs) (11), which are single-pass transmembrane sialic acid-binding Ig-like lectins typically found on the surface of

leukocytes (12–14). The cytosolic domains of most CD33-related Siglecs harbor inhibitory intracellular ITIM motifs that induce an immunosuppressive signal, but some can instead recruit DAP-12 with an activating intracellular domain, leading to augmentation of the immune response. Inhibitory Siglecs, which constitute the majority of CD33rSiglecs, can block cytokine secretion induced through Toll-like receptor (TLR) signaling (14–18) and may have evolved as a self-tolerance mechanism in which host leukocytes are inhibited when they recognize “self-associated molecular patterns” (SAMPs) presented by sialic acids abundantly displayed on host cell surfaces (12, 19–23).

Notably, certain bacterial pathogens have convergently evolved diverse mechanisms for displaying Siglec ligands on their cell surface, apparently to inhibit antipathogen immune responses via molecular mimicry (24–26). For example, sialylated polysaccharides of GBS engage inhibitory CD33rSiglecs found on neutrophils and myeloid lineage cells. Most such recognized microbial mimics of SAMPs for CD33rSiglec recognition are glycans. However, in at least one instance, Siglec-5 engagement also occurs through the cell wall-anchored  $\beta$ -protein expressed by certain GBS strains, with a similar suppression of the innate immune response of myeloid lineage cells like neutrophils (27, 28). As Siglec-5 is not prominent on human lymphocytes (29), it is not clear whether GBS  $\beta$ -protein can also inhibit this class of leukocytes.

GBS induces a form of immunogenic cell death called pyroptosis, mediated by an intracellular signaling complex called the

## Significance

Direct interactions between natural killer (NK) cells and bacteria are rarely observed, and the consequences of these interactions not well understood. We show that human NK cells exposed to the bacterium group B *Streptococcus* (GBS) undergo pyroptosis, a type of inflammatory cell death. By releasing inflammatory mediators, pyroptosis is thought to be a way for sentinels to die and alert the immune system of infection. Interestingly, we also found that GBS has a protein that binds to Siglec-7, an inhibitory molecule on NK cells. Siglec-7 inhibits pyroptosis and silences the sentinel activity of NK cells by preventing the release of inflammatory molecules. These studies suggest that a human pathogen can silence the sentinel by specific interaction with a Siglec protein.

Author contributions: J.J.F., C.-M.T., V.N., A.V., and J.D.B. designed research; J.J.F., C.-M.T., and S.S. performed research; J.J.F., V.N., A.V., and J.D.B. contributed new reagents/analytic tools; J.J.F., C.-M.T., S.S., V.N., A.V., and J.D.B. analyzed data; and J.J.F., V.N., A.V., and J.D.B. wrote the paper.

The authors declare no conflict of interest.

This article is a PNAS Direct Submission.

Published under the PNAS license.

<sup>1</sup>To whom correspondence may be addressed. Email: a1varki@ucsd.edu or jdbui@ucsd.edu.

This article contains supporting information online at [www.pnas.org/lookup/suppl/doi:10.1073/pnas.1804108115/-DCSupplemental](http://www.pnas.org/lookup/suppl/doi:10.1073/pnas.1804108115/-DCSupplemental).

Published online September 25, 2018.

inflammasome, which comprises several different signaling domains that multimerize upon binding of key ligands (30–33). Under canonical inflammasome activation, multimerization of the complex processes a proenzyme, such as caspase-1, into its mature form, enabling it to enzymatically cleave proinflammatory cytokines such as IL-1 $\beta$  from its proform into its mature form (34, 35). Cells activated for pyroptotic cell death ultimately swell and burst, allowing dissemination of the enzymatically cleaved proinflammatory cytokines into the extracellular space for the recruitment and activation of nearby leukocytes such as neutrophils and macrophages. Through this inflammatory pathway, pyroptosis acts as an “alarm signal” that promotes downstream host-protective antibacterial activities.

In contrast to myeloid lineage cells, the predominant inhibitory CD33rSiglec on NK cells is Siglec-7, which engages sialylated ligands on tumor cells to suppress NK cell responses (12, 21, 36–41). However, as this outcome does not favor the host, the natural role of Siglec-7 in controlling NK cell reactivity remains poorly explored. In this study, we report that GBS  $\beta$ -protein binds Siglec-7. As direct interactions between extracellular bacteria and NK cells are rarely observed and incompletely understood (10), we examined the consequence of this engagement upon the NK cell innate immune response. We found that NK cells undergo pyroptosis after exposure to bacteria. However, when Siglec-7 was engaged by  $\beta$ -protein, pyroptosis was inhibited, suggesting that GBS evolved this binding ability to down-regulate inflammasome activation and prevent recruitment of other innate immune cells.

## Results

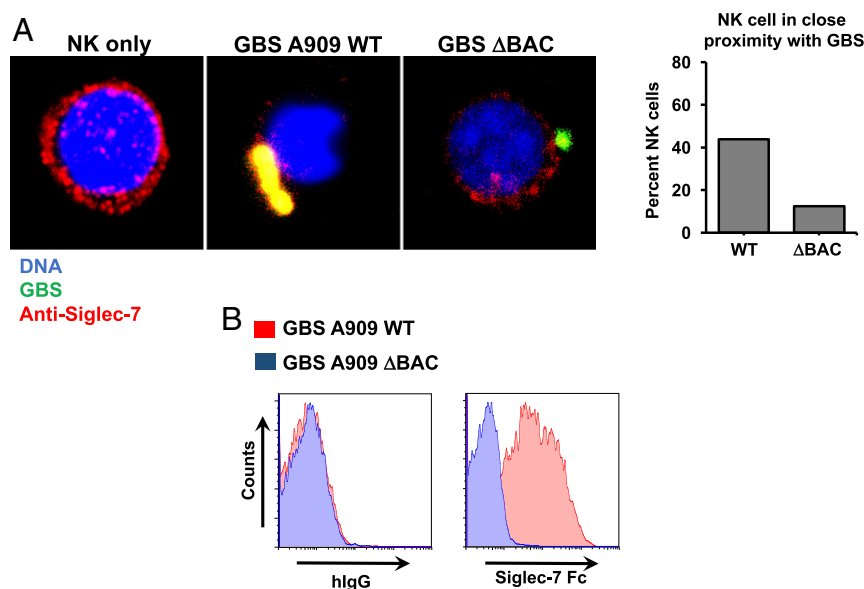
**GBS  $\beta$ -Protein Engages NK Cells via Siglec-7.** GBS sialylated polysaccharide capsules of various serotypes engage the extracellular domains of specific recombinant soluble human Siglec receptors, including Siglec-7 (24). We later found that certain GBSs can engage Siglec-5 via their  $\beta$ -protein, but it was unclear whether other Siglec receptors also bind to this protein (27). A subsequent screen for binders to  $\beta$ -protein revealed that Siglec-7 also bound. As Siglec-7 is expressed primarily on human NK cells, we used confocal microscopy to demonstrate direct contact between GBS labeled with FITC and the surface of NK cells (Fig. 1A). Although Siglec-7 is uniformly distributed across the surface of uninfected NK cells, immunofluorescent labeling revealed clear coclustering of receptors toward multiple FITC-

labeled WT GBSs on the surface of NK cells. Interestingly, based on these confocal images, there may even be intracellular Siglec-7 receptors residing in endosomal compartments, but further validation by costaining with endosomal markers will be required for a more in-depth understanding.

In contrast to the results with WT GBS, Siglec-7 did not cluster around  $\beta$ -protein-deficient GBS ( $\Delta$ BAC). It is worth noting that there are no morphological differences between WT GBS vs.  $\Delta$ BAC, but rather we believe there were more WT GBSs captured in direct contact with the NK cell visualized. To complement these observations, flow cytometric analysis of WT GBS indeed showed a positive signal for binding to a Siglec-7 Fc chimera compared with total human IgG (negative control), whereas virtually no signal was seen for Siglec-7 Fc binding to the  $\Delta$ BAC mutant (Fig. 1B).

The Siglec-5-binding region (B6N) of GBS  $\beta$ -protein spans amino acid residues 1–153, but the adjacent IgA binding region (IgA-BR) spanning amino acid residues 154–225 is not recognized by Siglec-5 (28). Western blot analysis of purified B6N and IgA-BR peptides probed with Siglec-7 Fc also showed a direct interaction between Siglec-7 and B6N, but not IgA-BR (*SI Appendix, Fig. S1A*). ELISA analysis with immobilized B6N or IgA-BR probed by Siglec-7 Fc supported these findings (*SI Appendix, Fig. S1B*). The Siglec-7–B6N interaction appeared to be relatively stronger than the previously recognized Siglec-5–B6N interaction. When Siglec-7 Fc was coincubated with the S7.7 anti-Siglec-7 monoclonal antibody, the binding signal was reduced to background levels (*SI Appendix, Fig. S1C*), but anti-Siglec-7 antibody 194212 did not reduce the signal in a significant manner. In view of these findings, subsequent experiments used clone S7.7 as a blocking antibody against Siglec-7 and  $\beta$ -protein interaction.

To determine which extracellular domain on Siglec-7 might contribute to B6N recognition, we probed immobilized B6N by using previously constructed Siglec-Fc proteins with the V-set and underlying C2 domain swapped between Siglec-7 and Siglec-9 (26). By ELISA, we found that Siglec-7 V-set + Siglec-9 C2 fusion Fc bound to B6N at nearly equal levels as Siglec-7 Fc (*SI Appendix, Fig. S1D*). However, the Siglec-9 V-set + Siglec-7 C2 fusion Fc had no detectable binding to B6N, suggesting that the V-set domain of Siglec-7 is primarily responsible for B6N engagement.



**Fig. 1.** GBS strain A909 (GBS A909) interacts with human NK cells through the cell wall-anchored  $\beta$ -protein and Siglec-7 receptor. (A) Images taken by confocal microscopy show even distribution of Siglec-7 (red) across the cell surface of human NK cells under normal conditions. When NK cells are infected with FITC-labeled GBS (green), Siglec-7 on NK cells clusters toward GBS. Infection with  $\beta$ -protein-deficient mutant GBS  $\Delta$ BAC restores the even distribution of Siglec-7 across the surface of NK cells. (B) Flow cytometry histograms of WT GBS A909 and  $\Delta$ BAC stained with recombinant chimeric Siglec-7-Fc protein or IgG-Fc control. GBS A909 stained with Siglec-7-Fc showed positive signals above IgG-Fc, but GBS  $\Delta$ BAC did not display any positive signals.

**NK Cell Responses to GBS Are Suppressed by  $\beta$ -Protein Engagement of Siglec-7.** Although NK cells are not typically studied as primary responders to extracellular bacteria, we determined the consequence of exposing NK cells to WT or  $\Delta$ BAC GBS. We unexpectedly observed through flow cytometry analysis of forward and side scatter that there were major morphological changes in NK cells incubated with the  $\Delta$ BAC mutant compared with cells incubated with WT GBS (Fig. 2A). Propidium iodide (PI) staining showed a much greater proportion of PI-positive NK cells when exposed to the  $\Delta$ BAC mutant vs. WT GBS (Fig. 2B). These data indicate that GBS  $\beta$ -protein is cytoprotective for NK cells.

GBS induces pyroptosis in cells that express inflammasome-associated proteins, and the  $\beta$ -hemolysin/cytolysin ( $\beta$ -h/c) toxin has been implicated as the principal activator of the NLRP3 inflammasome complex (30, 31, 33). To explore inflammasome activation in human NK cells, we confirmed expression of NLRP3 in freshly isolated, sterile human NK cells by flow cytometry in peripheral blood from healthy donors with an anti-NLRP3 antibody (Fig. 2C). These results support a previous study that also described NLRP3 expression in human NK cells (42). We next examined inflammasome-induced cell death events such as release of intracellular contents caused by cellular swelling and bursting, dissemination of the proinflammatory cytokine IL-1 $\beta$ , and oligomerization of inflammasome proteins into foci. NK cells were exposed to WT or  $\Delta$ BAC GBS and then stained by using an anti-NLRP3 antibody after fixation and permeabilization. By using confocal microscopy to visualize signals from the anti-NLRP3 antibody, we found that a greater percentage of NK cells contained NLRP3 foci when exposed to the  $\Delta$ BAC mutant compared with WT GBS (Fig. 2D and *SI Appendix, Fig. S2*). Consistent with pyroptosis, release of the intracellular enzyme lactate dehydrogenase (LDH), a classic marker of membrane-disrupted cell death, as well as IL-1 $\beta$ , was much higher in the supernatant of NK cells exposed to  $\Delta$ BAC vs. WT GBS (Fig. 3A and B).

Pro-IL-1 $\beta$  requires proteolytic cleavage by caspase-1 to become active. To assess whether the IL-1 $\beta$  released from GBS-exposed NK cells is functionally active, supernatants from GBS-exposed NK cells were applied to an IL-1 $\beta$  reporter cell line. Supernatant from NK cells exposed to  $\Delta$ BAC elicited a stronger signal from the IL-1 $\beta$  reporter cell line compared with supernatants from WT GBS-exposed NK cells (Fig. 3C).

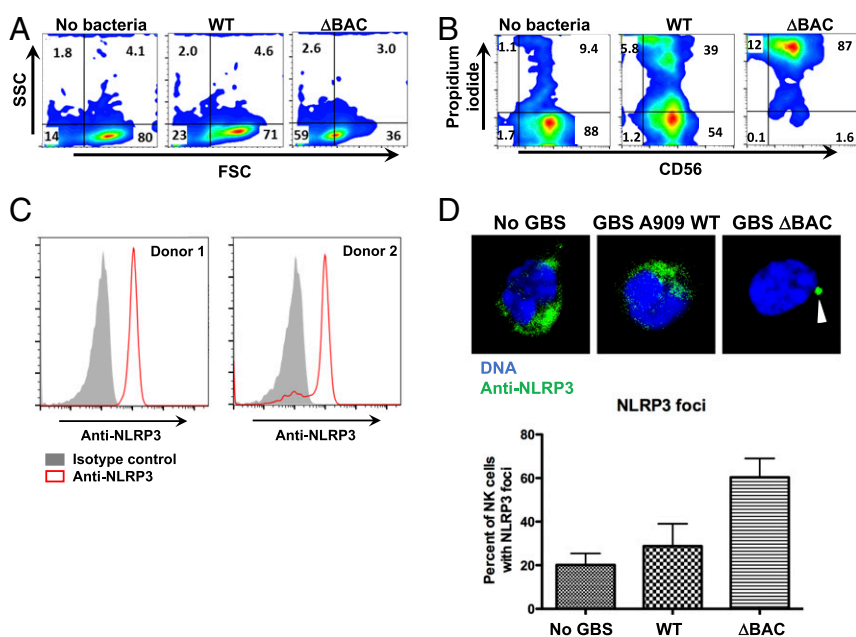
Furthermore, we found greater concentrations of active caspase-1 in the supernatant of  $\Delta$ BAC-infected vs. WT-infected NK cells (Fig. 3D). IL-1 $\beta$  secretion was reduced in the presence of the caspase-1 inhibitor Ac-YVAD-CMK and specific NLRP3 inhibitor CRID3, indicating a crucial role of the NLRP3 inflammasome for NK cell pyroptosis (Fig. 3E).

NK cells possess cytolytic molecules and proteases including granzymes (3). Granzyme B was released into the supernatant with greater concentrations from NK cells exposed to  $\Delta$ BAC mutant compared with WT GBS (Fig. 3F). Collectively, these data suggest that the GBS  $\beta$ -protein inhibits formation of the inflammasome complex and its downstream effects such as cell lysis and IL-1 $\beta$  secretion in NK cells.

**Siglec-7 Engagement by  $\beta$ -Protein Suppresses Inflammasome Responses in NK Cells.** A greater percentage of NK cells incubated with WT GBS in the presence of anti-Siglec-7 blocking antibodies were PI-positive compared with no antibody or isotype control antibody (Fig. 4A). LDH release was also increased from NK cells exposed to WT GBS in the presence of anti-Siglec-7 antibodies compared with isotype control antibodies (Fig. 4B). These observations were recapitulated upon determination of the relative concentrations of IL-1 $\beta$ , caspase-1, and granzyme B in the NK cell supernatant (Fig. 4C–E). These data indicate that Siglec-7 can modulate inflammasome formation in NK cells, and our observation that anti-Siglec-7 antibody blocks ligand engagement to enhance inflammasome formation is consistent with the known inhibitory properties of Siglec-7.

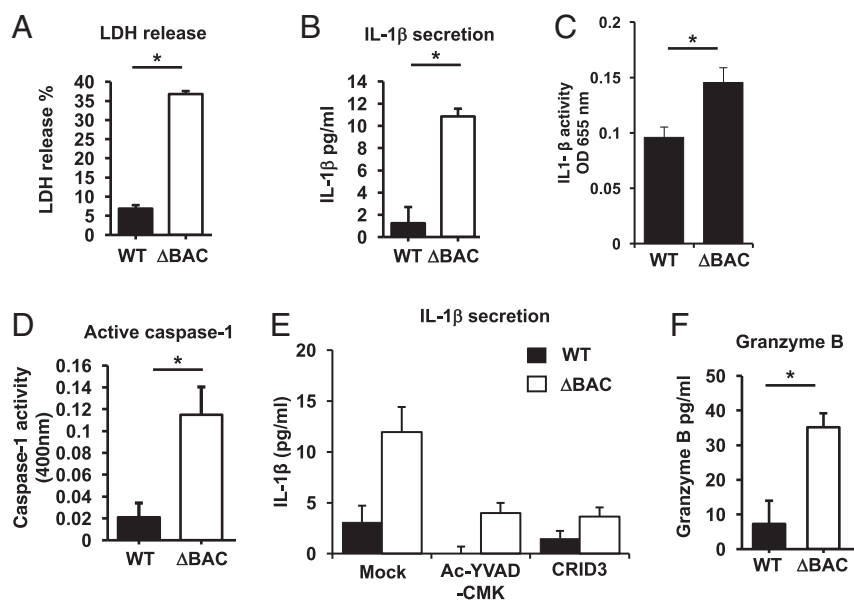
## Discussion

In this work, we have explored a rarely studied direct interaction between NK cells and extracellular bacteria. Our experiments uncovered three previously undescribed immune interactions: pyroptosis of NK cells in response to exposure to extracellular bacteria, Siglec-mediated inhibition of such pyroptosis, and NK cell Siglec interactions with  $\beta$ -protein on an important human pathogen, GBS. Based on these findings, we propose that NK cells may function as early sentinels of bacterial infection via their ability to undergo pyroptosis, alerting the other components of the immune response via production of the critical proinflammatory cytokine IL-1 $\beta$  and release of intracellular contents recognized as



**Fig. 2.** Streptococcal  $\beta$ -protein protects NK cells from death after infection. (A) Forward-and side-scatter analysis of primary human NK cells in the uninfected state or infected with GBS WT or GBS  $\Delta$ BAC. (B) Flow cytometry analysis of primary CD56<sup>+</sup> cells stained with PI to determine cell death without infection or with infection by GBS WT or GBS  $\Delta$ BAC. (C) Flow cytometry histograms of permeabilized primary human NK cells stained with anti-NLRP3 antibody from two donors. (D) Confocal microscopy images of NK cells stained with anti-NLRP3 antibody without infection or with infection by GBS WT or GBS  $\Delta$ BAC. The graph quantifies the percentage of NK cells with NLRP3 foci per field of view for each incubation condition. Error bars represent SD.





**Fig. 3.** Streptococcal  $\beta$ -protein suppresses inflammasome activation of human NK cells. (A) LDH release from NK cells was measured after infection by GBS WT or GBS  $\Delta$ BAC. (B) ELISA analysis of IL-1 $\beta$  secretion from NK cells after infection by GBS WT or  $\Delta$ BAC. (C) Relative amounts of active of IL-1 $\beta$  released from NK cells infected by GBS WT or GBS  $\Delta$ BAC was determined by using IL-1 $\beta$ -sensitive cells. (D) Relative concentrations of active caspase-1 released into the supernatant by NK cells infected by GBS WT or GBS  $\Delta$ BAC measured by a caspase-1-cleavable reporter peptide. (E) ELISA analysis of IL-1 $\beta$  secreted into the supernatant by NK cells infected with GBS WT or GBS  $\Delta$ BAC in the absence or presence of caspase-1 inhibitor Ac-YVAD-CMK or NLRP3 inhibitor CRID3. (F) ELISA analysis of granzyme B released into the supernatant of NK cells infected with GBS WT or GBS  $\Delta$ BAC.

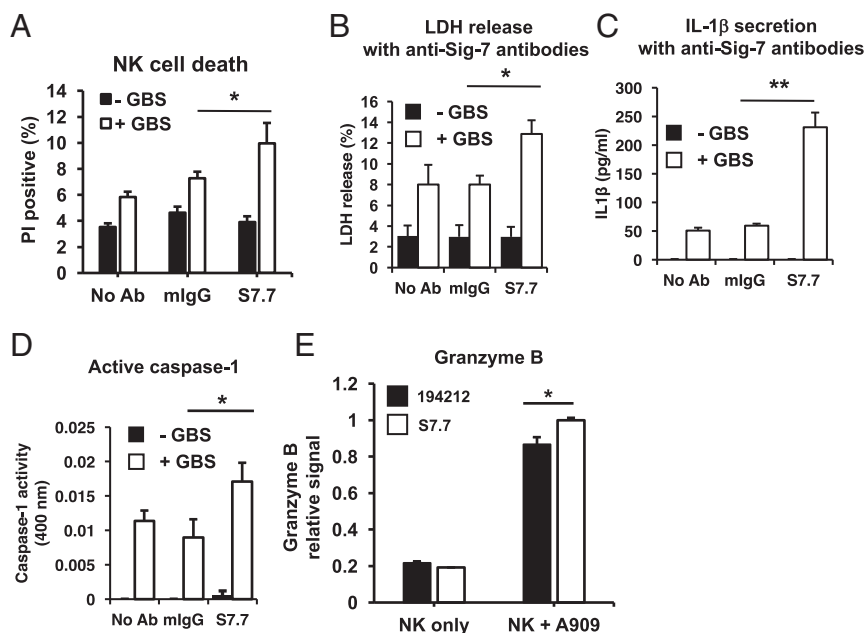
“danger-associated molecular patterns” (DAMPs). Indeed, a different class of lymphocytes called NKT cells recognize bacterial glycolipids and release cytokines that can act as alarm signals to recruit other innate immune cells (43). From an evolutionary perspective, GBS may derive a survival benefit in the host, as  $\beta$ -protein binding to Siglec-7 suppresses the danger signaling response of the NK cells. This “silencing of the sentinel” is consistent with the otherwise paradoxical “protective” effect of the interaction on the NK cells. Functional consequences of this interaction are supported by the observation that certain other bacteria have evolved molecules to inhibit this pathway (44–46).

NK cells are most often studied in the context of recognizing aberrant host cells, such as tumor cells or cells infected by intracellular pathogens (2, 3). Indeed, NK cells have evolved recognition receptors to detect when cells are infected or transformed (1). Some of these receptors bind to viral ligands, and others bind to induced “self” molecules. NK cells also express receptors that

can detect extracellular bacteria, including pattern recognition receptors. In our study, we define a role for the inhibitory receptor Siglec-7 in blocking GBS-induced pyroptosis of NK cells.

GBS and other similar hemolytic bacteria induce pyroptosis upon infection. In macrophages, pyroptosis can be induced by a GBS  $\beta$ -hemolysin and associated pigment that destabilizes the membrane and induces  $K^+$  efflux (31, 33), a known upstream activator of the NLRP3 inflammasome (47). It is likely that this pathway also promotes NK cell pyroptosis, as we have found evidence for NLRP3 oligomerization within NK cells after GBS infection. It is also for this reason that we have focused on NLRP3-mediated pyroptosis by GBS in human NK cells, although a previous study has also demonstrated NOD2 expression in NK cells as well (42). It remains to be seen whether other inflammasome receptors are also expressed in human NK cells.

We found that Siglec-7 engagement can block activation of the inflammasome by GBS in NK cells. Siglec-7 belongs to the



**Fig. 4.** NK cell inflammasome activation modulated by Siglec-7. (A) Flow cytometry analysis of NK cells stained with PI with or without infection by GBS WT in the presence of isotype control or anti-Siglec-7 antibody clone S7.7. (B) Detection of relative LDH released into the supernatant of NK cells with or without infection by GBS WT in the presence or absence of anti-Siglec-7 antibody. (C) ELISA analysis of IL-1 $\beta$  secreted into the supernatant of NK cells with or without infection by GBS WT in the presence or absence of anti-Siglec-7 antibody. (D) Relative levels of active caspase-1 in the supernatant of NK cells with or without infection in the absence or presence of anti-Siglec-7 antibody was determined by a fluorescent caspase-1 cleavable reporter peptide. (E) Release of granzyme B was determined by ELISA analysis of supernatant of NK cells with or without infection in the absence or presence of anti-Siglec-7 antibody clone 194212 or clone S7.7.

immunosuppressive CD33-related primate Siglec family, which harbors intracellular ITIM domains that phosphorylate and recruit SHP2 phosphatase upon ligand binding, a first step of the inhibitory signaling cascade well characterized for Siglec-7 (48). Our results are consistent with other studies demonstrating how pathogens exploit ITIM receptors to suppress inflammasome activation and IL-1 $\beta$  production (49, 50). However, it remains to be understood how the Siglec-7-mediated intracellular signaling cascade can cross-talk to prevent oligomerization of the NLRP3 inflammasome. Siglecs block TLR activation, and a recent model of inflammasome activation places TLR signaling as a “priming” event (51, 52). Indeed, a prior study found that MyD88 deficiency in dendritic cells blocked inflammasome activity induced by GBS (30). Admittedly, the series of experiments determining whether an anti-Siglec-7 blocking antibody negates the suppressive interaction by  $\beta$ -protein did not yield as striking increases in signals as we would have expected (Fig. 4). However, anti-Siglec-7 antibodies have also been observed to cross-link and functionally suppress NK cell activity, so the true difference in signal may have been dampened by this effect (40).

Immunosuppressive Siglec-7 likely evolved as a mechanism for NK cells to recognize “self” antigens such as  $\alpha$ 2-8-linked disialic acid structures (in *cis*) or GD3 (in *trans*) and prevent NK cell attack on healthy endogenous cells (22, 53). The cell wall-anchored  $\beta$ -protein on GBS effectively hijacks Siglec-7 to suppress activation of the NLRP3 inflammasome. Even though this proinflammatory function is mechanistically aligned with the immunosuppressive properties of Siglec-7, Siglecs modulating pyroptotic cell death have not previously been reported to our awareness. Notably, unlike the case with Siglec-5/14 (15) and Siglec-11/16 in myeloid lineage cells (17), there is no known paired activating receptor counterpart to Siglec-7 on NK cells.

A major barrier preventing deeper understanding of NK cell pyroptosis in response to GBS infections is the lack of an animal model. CD33-related Siglecs are rapidly evolving, and murine counterparts are only definable as functionally equivalent orthologs or paralogs of primate CD33-related Siglecs. Although the murine Siglec counterparts provide a conceptual understanding of Siglec-based immunomodulation, it is not possible to directly translate murine Siglec studies to human Siglec biology, and expression of Siglecs on murine NK cells have not yet been described (13).

We observed release of granzyme B into the extracellular space after pyroptosis of NK cells. Recent studies have shown that granzyme B, in the presence of granulysin, can directly kill bacteria and have suggested a role for these molecules in the eradication of intracellular bacteria (54, 55). These studies suggest that cytotoxic lymphocytes recognize infected host cells and use cytotoxic granules to kill the host cell and the intracellular pathogen. Our results are different from these previous studies because we demonstrate a direct interaction between NK cells and extracellular bacteria. Although we have not shown a functional role for extracellular granzyme B in the context of a pyroptotic response, it is known that granzyme B can remodel the ECM by cleaving architectural matrix proteins, perhaps increasing trafficking of professional bacteria-killing leukocytes such as neutrophils and macrophages to the infected tissue (56). The release of granzyme B, cleaved caspase-1, and other intracellular contents indicate that the NK cell response to GBS involved cell death. This contrasts with a recent study showing that dendritic cells could activate the inflammasome via caspase-11 without inducing pyroptotic cell death, leading to a “hyperactive” state (57). In the case of granzyme B and IL-1 $\beta$ , it is difficult to conclude whether the dissemination of these molecules through pyroptosis of NK cells will have a significant physiological impact without an appropriate animal model, but the same hurdles for using an animal model applies as we had discussed earlier. However, as the IL-1 $\beta$  released from pyroptotic NK cells was applied to a reporter cell line with a detectable signal (Fig. 4C), we are

confident that the cytokine was cleaved into its active form at a concentration detectable by the assay. We emphasize that the pyroptotic response of NK cells to GBS contrasts with “classic” NK cell activities such as IFN- $\gamma$  production and cytotoxicity. Although GBS-Siglec-7 interactions can suppress pyroptosis, it is not known whether this would also suppress IFN- $\gamma$  production and cytotoxicity. However, it is difficult for us to envision a natural and physiological situation in which NK cells are stimulated to produce IFN- $\gamma$  but are in direct contact with GBS to suppress its production, as GBS is not known to have ligands to activate NKG2D or other NK cell-activating receptors. Nevertheless, it is worth noting that previous studies have demonstrated that functional engagement of Siglec-7 can suppress production of IFN- $\gamma$  by NK cells stimulated by pharmacologic reagents (40).

A role for NK cells in response to extracellular bacteria has been proposed (10), but whether NK cells protect or further exacerbate bacterial infection is not clear. Notably, multiple bacterial toxins can activate NK cells, including streptococcal pyrogenic exotoxin A, staphylococcal enterotoxin B, and listeriolysin O (58–60). At least for the latter toxin, the effect on NK cells was indirect and required recognition of the toxin by antigen-presenting cells. Nevertheless, direct interaction between NK cells and PAMPs (pathogen-associated molecular patterns) has been documented, although typically the expression of receptors for PAMPs (such as TLRs) on NK cells is low and the response of purified NK cells to bacterial ligands is not robust. When they have been activated, NK cells augment innate immune responses via cross-talk with other cell types. This positive role for NK cells in initiating immune responses is supported by findings that other bacterial toxins inhibit NK cells, including leukotoxin derived from *Actinobacillus actinomycetemcomitans* and exotoxin A from *Pseudomonas aeruginosa* (61, 62). We also suggest a positive role for NK cells in alerting the immune system to infection, but our observation stands distinct from these prior studies in that we show that NK cells undergo pyroptosis. Moreover, we show direct and strong interaction between a bacterial ligand and Siglec-7, a highly expressed receptor on NK cells. Other groups have found that Siglec-7 also recognizes surface lipooligosaccharides of *Campylobacter jejuni* that can be modified with ganglioside-like sialylated terminal structures in the core oligosaccharides, potentially influencing host–pathogen interactions (63).

In summary, we found that NK cells undergo pyroptosis in response to bacterial infection, but GBS  $\beta$ -protein mediated binding to the Siglec-7 receptor blunts the pyroptotic phenotype, proteolytic processing and secretion of IL-1 $\beta$ , and release of intracellular contents such as granzyme B. Human pathogens such as GBS may evolve mechanisms such as  $\beta$ -protein engagement of Siglec-7 on NK cells to evade innate immunity.

## Materials and Methods

All studies were approved by the University of California, San Diego Institutional Review Board. Consent was obtained for experiments involving human subjects. Human NK cells were derived from different donors in this study. Peripheral blood mononuclear cells were isolated by Ficoll-Paque-based centrifugation, and NK cells were isolated by the Human NK Cell Enrichment Kit (Miltenyi) per manufacturer’s instructions. *Streptococcus agalactiae* (group B streptococcal type Ia strain A909, or GBS) and its isogenic  $\Delta$ BAC mutants have been described previously (15). Human NK cell exposure to GBS was performed by coinoculation of GBS to NK cells at multiplicities of infection of 10:1 or 1:1 for 10 min or 30 min before NK cells were subjected to further analysis. Further details for the materials and methods used to conduct these studies are provided in *SI Appendix, Supplemental Materials and Methods*. *SI Appendix, SI Materials and Methods* also includes details on GBS strains and growth conditions, human NK cell isolation and exposure to GBS methods, ELISA conditions for binding assays and cytokine secretion analysis, flow cytometry procedures, confocal microscopy procedures, and all relevant antibody clones and other reagent details required to execute the experimental procedures referred to in the text.

**ACKNOWLEDGMENTS.** We thank members of the laboratories of J.D.B., A.V., and V.N. for helpful discussions and suggestions. This study was supported by a grant from The Hartwell Foundation (to J.D.B.), National Institutes of

Health (NIH) Grant CA157885 (to J.D.B.), NIH Grant 1P01HL107150/National Heart, Lung, and Blood Institute Program of Excellence in Glycosciences (to A.V. and V.N.), and NIH Grant R01GM032373 (to A.V.).

- Pegram HJ, Andrews DM, Smyth MJ, Darcy PK, Kershaw MH (2011) Activating and inhibitory receptors of natural killer cells. *Immunol Cell Biol* 89:216–224.
- Guillerey C, Huntington ND, Smyth MJ (2016) Targeting natural killer cells in cancer immunotherapy. *Nat Immunol* 17:1025–1036.
- Morvan MG, Lanier LL (2016) NK cells and cancer: You can teach innate cells new tricks. *Nat Rev Cancer* 16:7–19.
- Bauer S, et al. (1999) Activation of NK cells and T cells by NKG2D, a receptor for stress-inducible MICA. *Science* 285:727–729.
- Wu J, et al. (1999) An activating immunoreceptor complex formed by NKG2D and DAP10. *Science* 285:730–732.
- Jamieson AM, et al. (2002) The role of the NKG2D immunoreceptor in immune cell activation and natural killing. *Immunity* 17:19–29.
- Bassani R, Bottino C, Cantoni C, Moretta A (2002) Human natural killer receptors and their ligands. *Curr Protoc Immunol* Chapter 14:Unit 14.10.
- Lanier LL (2015) NKG2D receptor and its ligands in host defense. *Cancer Immunol Res* 3:575–582.
- Groh V, Wu J, Yee C, Spies T (2002) Tumour-derived soluble MIC ligands impair expression of NKG2D and T-cell activation. *Nature* 419:734–738.
- Souza-Fonseca-Guimaraes F, Adib-Conquy M, Cavaillon JM (2012) Natural killer (NK) cells in antibacterial innate immunity: Angels or devils? *Mol Med* 18:270–285.
- Angata T, Margulies EH, Green ED, Varki A (2004) Large-scale sequencing of the CD33-related Siglec gene cluster in five mammalian species reveals rapid evolution by multiple mechanisms. *Proc Natl Acad Sci USA* 101:13251–13256.
- Fraschilla I, Pillai S (2017) Viewing Siglecs through the lens of tumor immunology. *Immunol Rev* 276:178–191.
- Schwarz F, Fong JJ, Varki A (2015) Human-specific evolutionary changes in the biology of Siglecs. *Adv Exp Med Biol* 842:1–16.
- Crocker PR, Paulson JC, Varki A (2007) Siglecs and their roles in the immune system. *Nat Rev Immunol* 7:255–266.
- Ali SR, et al. (2014) Siglec-5 and Siglec-14 are polymorphic paired receptors that modulate neutrophil and amnion signaling responses to group B *Streptococcus*. *J Exp Med* 211:1231–1242.
- Fong JJ, et al. (2015) Immunomodulatory activity of extracellular Hsp70 mediated via paired receptors Siglec-5 and Siglec-14. *EMBO J* 34:2775–2788.
- Schwarz F, et al. (2017) Paired Siglec receptors generate opposite inflammatory responses to a human-specific pathogen. *EMBO J* 36:751–760.
- Schwarz F, et al. (2015) Siglec receptors impact mammalian lifespan by modulating oxidative stress. *eLife* 4:e06184.
- Varki A (2011) Since there are PAMPs and DAMPs, there must be SAMPs? Glycan “self-associated molecular patterns” dampen innate immunity, but pathogens can mimic them. *Glycobiology* 21:1121–1124.
- Lizcano A, et al. (2017) Erythrocyte sialoglycoproteins engage Siglec-9 on neutrophils to suppress activation. *Blood* 129:3100–3110.
- Hudak JE, Canham SM, Bertozzi CR (2014) Glycocalyx engineering reveals a Siglec-based mechanism for NK cell immunoevasion. *Nat Chem Biol* 10:69–75.
- Nicoll G, et al. (2003) Ganglioside GD3 expression on target cells can modulate NK cell cytotoxicity via Siglec-7-dependent and -independent mechanisms. *Eur J Immunol* 33:1642–1648.
- Xiao H, Woods EC, Vukojicic P, Bertozzi CR (2016) Precision glycocalyx editing as a strategy for cancer immunotherapy. *Proc Natl Acad Sci USA* 113:10304–10309.
- Carlin AF, Lewis AL, Varki A, Nizet V (2007) Group B streptococcal capsular sialic acids interact with Siglecs (immunoglobulin-like lectins) on human leukocytes. *J Bacteriol* 189:1231–1237.
- Carlin AF, et al. (2009) Molecular mimicry of host sialylated glycans allows a bacterial pathogen to engage neutrophil Siglec-9 and dampen the innate immune response. *Blood* 113:3333–3336.
- Secundino I, et al. (2016) Host and pathogen hyaluronan signal through human Siglec-9 to suppress neutrophil activation. *J Mol Med (Berl)* 94:219–233.
- Carlin AF, et al. (2009) Group B *Streptococcus* suppression of phagocyte functions by protein-mediated engagement of human Siglec-5. *J Exp Med* 206:1691–1699.
- Nordström T, et al. (2011) Human Siglec-5 inhibitory receptor and immunoglobulin A (IgA) have separate binding sites in streptococcal beta protein. *J Biol Chem* 286:33981–33991.
- Nguyen DH, Hurtado-Ziola N, Gagneux P, Varki A (2006) Loss of Siglec expression on T lymphocytes during human evolution. *Proc Natl Acad Sci USA* 103:7765–7770.
- Costa A, et al. (2012) Activation of the NLRP3 inflammasome by group B streptococci. *J Immunol* 188:1953–1960.
- Gupta R, et al. (2014) RNA and  $\beta$ -hemolysin of group B *Streptococcus* induce interleukin-1 $\beta$  (IL-1 $\beta$ ) by activating NLRP3 inflammasomes in mouse macrophages. *J Biol Chem* 289:13701–13705.
- Mohammadi N, et al. (2016) Neutrophils directly recognize group B streptococci and contribute to interleukin-1 $\beta$  production during infection. *PLoS One* 11:e0160249.
- Whidbey C, et al. (2015) A streptococcal lipid toxin induces membrane permeabilization and pyroptosis leading to fetal injury. *EMBO Mol Med* 7:488–505.
- Broz P, Dixit VM (2016) Inflammasomes: Mechanism of assembly, regulation and signalling. *Nat Rev Immunol* 16:407–420.
- Lamkanfi M, Dixit VM (2014) Mechanisms and functions of inflammasomes. *Cell* 157:1013–1022.
- Nicoll G, et al. (1999) Identification and characterization of a novel Siglec, Siglec-7, expressed by human natural killer cells and monocytes. *J Biol Chem* 274:34089–34095.
- Angata T, Varki A (2000) Siglec-7: A sialic acid-binding lectin of the immunoglobulin superfamily. *Glycobiology* 10:431–438.
- Jandus C, et al. (2014) Interactions between Siglec-7/9 receptors and ligands influence NK cell-dependent tumor immunosurveillance. *J Clin Invest* 124:1810–1820.
- Kawasaki Y, et al. (2010) Ganglioside DSGb5, preferred ligand for Siglec-7, inhibits NK cell cytotoxicity against renal cell carcinoma cells. *Glycobiology* 20:1373–1379.
- Shao JY, et al. (2016) Siglec-7 defines a highly functional natural killer cell subset and inhibits cell-mediated activities. *Scand J Immunol* 84:182–190.
- Mikulak J, Di Vito C, Zaghi E, Mavilio D (2017) Host immune responses in HIV-1 infection: The emerging pathogenic role of Siglecs and their clinical correlates. *Front Immunol* 8:314.
- Qiu F, Maniar A, Diaz MQ, Chapoval AI, Medvedev AE (2011) Activation of cytokine-producing and antitumor activities of natural killer cells and macrophages by engagement of Toll-like and NOD-like receptors. *Innate Immun* 17:375–387.
- Kinjo Y, et al. (2011) Invariant natural killer T cells recognize glycolipids from pathogenic Gram-positive bacteria. *Nat Immunol* 12:966–974.
- LaRock CN, Cookson BT (2012) The *Yersinia* virulence effector YopM binds caspase-1 to arrest inflammasome assembly and processing. *Cell Host Microbe* 12:799–805.
- Bergsbaken T, Cookson BT (2007) Macrophage activation redirects *Yersinia*-infected host cell death from apoptosis to caspase-1-dependent pyroptosis. *PLoS Pathog* 3:e161.
- Bergsbaken T, Fink SL, Cookson BT (2009) Pyroptosis: Host cell death and inflammation. *Nat Rev Microbiol* 7:99–109.
- Muñoz-Planillo R, et al. (2013) K<sup>+</sup> efflux is the common trigger of NLRP3 inflammasome activation by bacterial toxins and particulate matter. *Immunity* 38:1142–1153.
- Yamaji T, Mitsuki M, Teranishi T, Hashimoto Y (2005) Characterization of inhibitory signaling motifs of the natural killer cell receptor Siglec-7: Attenuated recruitment of phosphatases by the receptor is attributed to two amino acids in the motifs. *Glycobiology* 15:667–676.
- Nakayama M, et al. (2012) Inhibitory receptor paired Ig-like receptor B is exploited by *Staphylococcus aureus* for virulence. *J Immunol* 189:5903–5911.
- Lu R, Pan H, Shively JE (2012) CEACAM1 negatively regulates IL-1 $\beta$  production in LPS activated neutrophils by recruiting SHP-1 to a SYK-TLR4-CEACAM1 complex. *PLoS Pathog* 8:e1002597.
- Chen GY, et al. (2014) Broad and direct interaction between TLR and Siglec families of pattern recognition receptors and its regulation by Neu1. *eLife* 3:e04066.
- Latze E, Xiao TS, Stutz A (2013) Activation and regulation of the inflammasomes. *Nat Rev Immunol* 13:397–411.
- Avril T, North SJ, Haslam SM, Willison HJ, Crocker PR (2006) Probing the cis interactions of the inhibitory receptor Siglec-7 with alpha2,8-disialylated ligands on natural killer cells and other leukocytes using glycan-specific antibodies and by analysis of alpha2,8-sialyltransferase gene expression. *J Leukoc Biol* 80:787–796.
- Dotiwala F, et al. (2017) Granzyme B disrupts central metabolism and protein synthesis in bacteria to promote an immune cell death program. *Cell* 171:1125–1137.e11.
- Dotiwala F, et al. (2016) Killer lymphocytes use granzysin, perforin and granzymes to kill intracellular parasites. *Nat Med* 22:210–216.
- Buzza MS, et al. (2005) Extracellular matrix remodeling by human granzyme B via cleavage of vitronectin, fibronectin, and laminin. *J Biol Chem* 280:23549–23558.
- Aakhus AM, Stavem P, Hovig T, Pedersen TM, Solum NO (1990) Studies on a patient with thrombocytopenia, giant platelets and a platelet membrane glycoprotein Ib with reduced amount of sialic acid. *Br J Haematol* 74:320–329.
- Sacks LV, et al. (1991) A streptococcal erythrogenic toxin preparation augments natural killer activity of peripheral blood mononuclear cells. *J Infect Dis* 164:522–526.
- D’Orazio JA, Burke GW, Stein-Streilein J (1995) Staphylococcal enterotoxin B activates purified NK cells to secrete IFN-gamma but requires T lymphocytes to augment NK cytotoxicity. *J Immunol* 154:1014–1023.
- Nomura T, et al. (2002) Essential role of interleukin-12 (IL-12) and IL-18 for gamma interferon production induced by listeriolysin O in mouse spleen cells. *Infect Immun* 70:1049–1055.
- Shenker BJ, et al. (1994) Flow cytometric analysis of the cytotoxic effects of *Actinobacillus actinomycetemcomitans* leukotoxin on human natural killer cells. *J Leukoc Biol* 55:153–160.
- Michaels JE, Garfield SA, Hung JT, Cardell RRR, Jr (1990) Labeling of hepatic glycogen after short- and long-term stimulation of glycogen synthesis in rats injected with 3H-galactose. *Am J Anat* 188:419–428.
- Avril T, Wagner ER, Willison HJ, Crocker PR (2006) Sialic acid-binding immunoglobulin-like lectin 7 mediates selective recognition of sialylated glycans expressed on *Campylobacter jejuni* lipooligosaccharides. *Infect Immun* 74:4133–4141.

## Supplementary Information for

### **Siglec-7 Engagement by GBS $\beta$ -protein Suppresses Pyroptotic Cell Death of Natural Killer Cells**

Jerry J. Fong<sup>a,b</sup>, Chih-Ming Tsai<sup>a,b</sup>, Sudeshna Saha<sup>a,b</sup>, Victor Nizet<sup>a,c,d</sup>, Ajit Varki<sup>a,b,e</sup> and Jack D. Bui<sup>f</sup>

<sup>a</sup>Glycobiology Research and Training Center; <sup>b</sup>Department of Cellular and Molecular Medicine; <sup>c</sup>Department of Pediatrics; <sup>d</sup>Skaggs School of Pharmacy and Pharmaceutical Sciences, School of Medicine; <sup>e</sup>Department of Medicine; and <sup>f</sup>Department of Pathology, University of California, San Diego, La Jolla, CA 92093

Send email correspondence to Jack Bui ([jbui@ucsd.edu](mailto:jbui@ucsd.edu)), or Ajit Varki ([a1varki@ucsd.edu](mailto:a1varki@ucsd.edu)),

#### **This PDF file includes:**

Supplemental Information: Materials and Methods

Figure S1: Direct interaction between Siglec-7 and GBS  $\beta$ -protein.

Figure S2: NLRP3 foci formation in human NK cells after exposure to GBS.

## **Supplemental: Materials and Methods**

### *Bacterial strains and reagents*

*Streptococcus agalactiae* or group B streptococcal (GBS) type Ia strain A909 (WT) and its isogenic  $\Delta$ BAC mutants ( $\Delta$ BAC) have been described previously (1). Anti-Siglec-7 antibody 194212 was obtained from R&D Systems. Anti-Siglec-7 neutralizing antibody (clone S7.7) was obtained from BioLegend. Anti-NLRP3 rabbit monoclonal antibody (D2P5E) was obtained from Cell Signaling and BioLegend.

### *Human NK cell isolation*

Human NK cells derived from different donors were used in this study. To isolate the peripheral blood mononuclear cell fraction, whole blood was mixed with PBS at a 1:1 ratio and gently layered onto Ficoll-Paque solution (GE Healthcare). After centrifugation for 25 minutes in 4 degrees Celsius at 1000g, the enriched PBMC layer was removed and washed in PBS. Primary NK cells were isolated by the Human NK Cell Enrichment Kit (Miltenyi) using negative selection and subsequently cultured in RPMI 1640 supplemented with 10% FBS.

### *Human NK cell infection with GBS*

GBS was grown in Todd-Hewitt broth (Oxoid) at 37 degrees Celsius without shaking and added to  $2 \times 10^5$  cells of NK cells at MOIs of 10:1 or 1:1 (GBS:NK) for 30 minutes (NK cell death assays and cytokine secretion) or 10 minutes (measuring NLRP3 foci formation). At the indicated time points, cells and supernatant were harvested for further analysis.



### *Siglec-Fc ELISA and Western blot binding assays*

Siglec-7-Fc and purified  $\beta$ -protein, B6N, and IgA fragments were prepared as previously described (2,3). ELISA assays were performed by first adsorbing the  $\beta$ -protein (or negative controls) in sodium carbonate-bicarbonate buffer pH 9.2 onto the plate overnight at 4 degrees Celsius at the indicated concentrations. After washing with PBS-T (PBS + 0.1% Tween-20), the indicated Siglec-Fc protein was added to the plate for two hours. After three rounds of washing with PBS-T, an anti-human antibody conjugated to horseradish peroxidase was added to the well for one hour. After three hours of washing with PBS-T, the wells were exposed to the ELISA HRP Substrate 680 (Li-Cor) and scanned and analyzed by the Odyssey Imager and software (Li-Cor).

Western blots were performed similarly. After the proteins were separation by SDS-PAGE and transferred onto a PVDF membrane, the membranes were incubated with Siglec-Fc overnight at 4 degrees Celsius. The next day, the membranes were washed, incubated with an anti-human antibody conjugated with IRDye800 (Li-Cor), washed, and then scanned and analyzed by the Odyssey Imager and software (Li-Cor).

### *Flow cytometry*

All flow cytometry analyses were performed on either a BD FACSCalibur or BD Canto II. Briefly, for flow cytometry assays that involve antibody or Siglec-Fc binding, the cells were incubated with the primary probe for 30 minutes on ice. The concentration used was 5  $\mu$ g/ml for Siglec-Fc or as per manufacturer's instructions based on antibody used. After washing, a secondary fluorophore-conjugated

antibody was added and incubated on ice in the dark for an additional 30 minutes. After further washing, the cells were analyzed on the flow cytometer using the relevant channels based on fluorophore used. NLRP3 staining was performed on primary human NK cells enriched as described above. After permeabilization by BD Cytofix/Cytoperm kit, NK cells were probed with an anti-NLRP3 antibody, washed, and detected with a secondary AlexaFluor488 conjugated antibody.

#### *Confocal microscopy*

Primary human NK cells were incubated with FITC-labeled GBS as previously described (citation) for 15 minutes at 37 °C, washed, and then fixed in 10% formalin at 4°C for 30 minutes. NK cells were probed with a PE-conjugated anti-Siglec-7 antibody, and DNA was labeled with DRAQ5. To count NLRP3 foci, freshly purified NK cells were infected with GBS A909 WT or  $\Delta$ BAC mutant at 37 °C for 30 min. NK cells were stained for NLRP3 (Clone D2P5E, BioLegend) following permeabilization, and NLRP3 foci were enumerated by counting at least 10 fields, and the average  $\pm$  SD is shown in the bar graph.

#### *Analysis of cytokine and cytolytic molecule secretion*

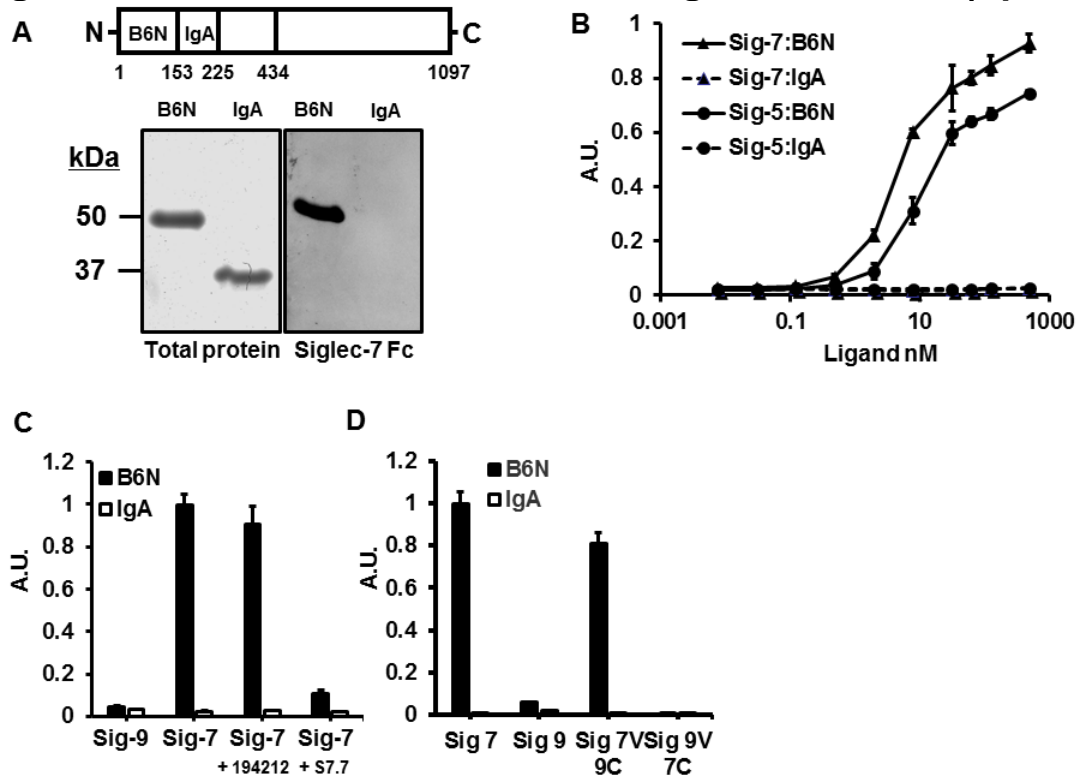
Cell-culture supernatants were harvested for ELISA to determine the amount of IL-1 $\beta$  (R&D Systems catalog# DY201-05) or granzyme B (BioLegend catalog# 439207) as per manufacturers' instructions. Cell death was measured by LDH release in supernatant as per manufacturer's instructions (Promega). Caspase-1 activity in culture supernatants was quantitated using Caspase-1 colorimetric assay kit as per manufacturer's instructions (BioVision). For detecting bioactive IL-1 $\beta$ , the HEK-Blue IL-1 $\beta$  reporter cell line (InVivoGen, catalog# HKB-IL1B) was

used. Supernatants from the GBS-NK cell co-incubation were centrifuged to remove cellular contaminants, and then applied to the cell lines as per manufacturer's instructions.

#### *Statistical analysis*

Statistical significance was analyzed by the unpaired  $t$  test. Data are expressed as mean  $\pm$  SD. Significance of  $p$  values was as follows: \* $p < 0.05$ , \*\* $p < 0.005$ , \*\*\* $p < 0.001$ .

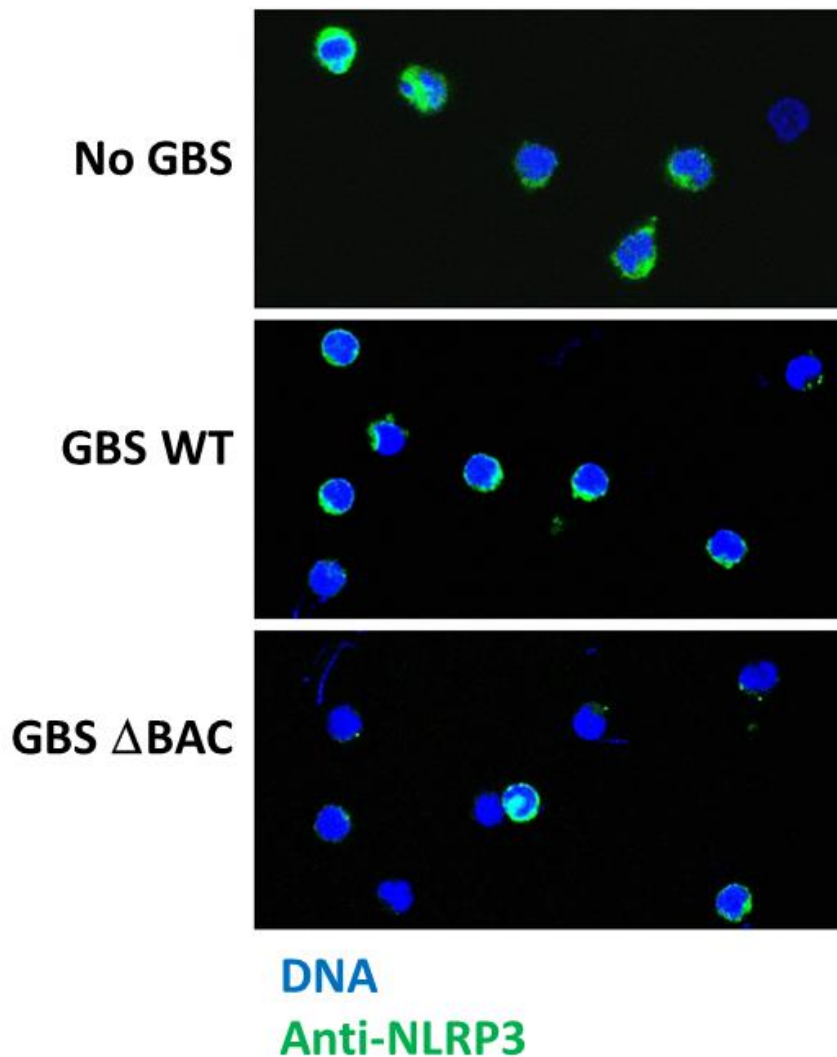
**Figure S1: Direct interaction between Siglec-7 and GBS  $\beta$ -protein**



**Fig. S1. Direct interaction between Siglec-7 and the B6N domain of the  $\beta$ -protein.** (A) Schematic of the  $\beta$ -protein detailing the regions containing the B6N and IgA domains and western blot of B6N and adjacent IgA peptide fragments derived from the  $\beta$ -protein probed by recombinant chimeric Siglec-7-Fc. (B) ELISA analysis comparing relative binding of Siglec-5-Fc and Siglec-7-Fc to B6N or IgA peptide fragments immobilized to the plate surface. (C) ELISA analysis of immobilized B6N or IgA peptide fragments by Siglec-9-Fc or Siglec-7-Fc in the absence or presence of anti-Siglec-7 antibody clone 194212 or clone S7.7. (D) ELISA analysis of immobilized B6N or IgA peptide fragments by Siglec-9-Fc, Siglec-7-Fc, or domain swapped Siglec-7 V-set + Siglec-9 C2-set-Fc, and Siglec-9 V-set + Siglec-7 C2-set-Fc.



**Figure S2: NLRP3 foci formation in NK cells after exposure to GBS**



**Fig. S2. Formation of NLRP3 foci in human NK cells after exposure to GBS A909 WT or  $\Delta$ BAC.** Lower magnification representative photos demonstrating NLRP3 foci formation in human NK cells after exposure to GBS WT (A909) or  $\Delta$ BAC, or without exposure to GBS.

## References

1. Carlin AF *et al.* (2009) Group B Streptococcus suppression of phagocyte functions by protein-mediated engagement of human Siglec-5. *J Exp Med* 206(8):1691–1699.
2. Secundino I *et al.* (2016) Host and pathogen hyaluronan signal through human siglec-9 to suppress neutrophil activation. *J Mol Med (Berl)* 94(2):219–233.
3. Nordström T *et al.* (2011) Human Siglec-5 inhibitory receptor and immunoglobulin A (IgA) have separate binding sites in streptococcal beta protein. *J Biol Chem* 286(39):33981–33991.